

Základná personálna štruktúra krízového štábu

Basic Personnel Structure of the Crisis Staff

Ing. Dušana Salenka

Ing. František Salenka

Ing. Marián Fúri

Ozbrojené sily SR

dusana.salenka@mil.sk, frantisek.salenka@mil.sk

marián.furi@mil.sk

Abstrakt

Článok pojednáva o možnej štruktúre krízového štábu určeného na riešenie krízových situácií so všetkými jeho časťami a prvkami. Je zameraný na celkovú štruktúru krízového štábu, ale aj na jednotlivých členov personálnej štruktúry ako jeho základných prvkov, s opisom požiadaviek na ich schopnosti, skúsenosti a vedomosti. Hlavné úsilie je položené na opis jednotlivých personálnych funkcií, ich zodpovedností a vzájomných vzťahov.

Kľúčové slova

Krízová situácia, Manažment mimoriadnych udalostí, Krízový štáb, Veliteľské stanovisko.

Abstract

This article deals with possible structure of crisis staff, which is pointed to solve the crisis situation, with all its parts and elements. It is aimed on general structure of staff as a whole part and also on its members as an essential part, with description of their requirements on abilities, skills and knowledge. The main effort has been aimed on description of these essential elements, their responsibilities and lines among them.

Key words

Crisis situation, Emergency management, Crisis staff, Command post.

1 Introduction

Crisis operations are well known for their critical demands on the decision making process (DMP). Due to this reason, it is necessary to create an appropriate organ, which is responsible for all steps, such as information gathering, analysis of situation, preparation, conduction and support of operation to solve the crises situation. In the international standards the crisis staffs are usually tasked with these issues.

2 Basic personnel structure of the crisis staff [1]

Crisis staff is the part of Incident Command Post (ICP). This ICP is created for the leading of the operation on the spot and consists of commander group, manoeuvre unit's commander officers and already mentioned crisis staff. The model of the whole structure of ICP is showed below.

These elaboration points on the most essential components of ICP in DMP which are connected to the crisis staff. The main effort is to put on analysis of its structure, requirement for each function and responsibilities of all members and asked requirements [2]. This model is only a proposal of the possible structure and its composition should be created in according with the real situation, requirements and accessible personnel and emergency assets. The basic personnel structure is not invariable; on the contrary this structure has to be very flexible and interoperable. Some segments can be cancelled, some added or joined in a cumulate function.

Presented structure is created in according with international procedures of emergency management agencies and practical skills from multinational environment. It is based on requirements from real life situation regarding the solution of crises situation. It is necessary to create the multifunction staff which is prepared to manage the situation in all critical ways.

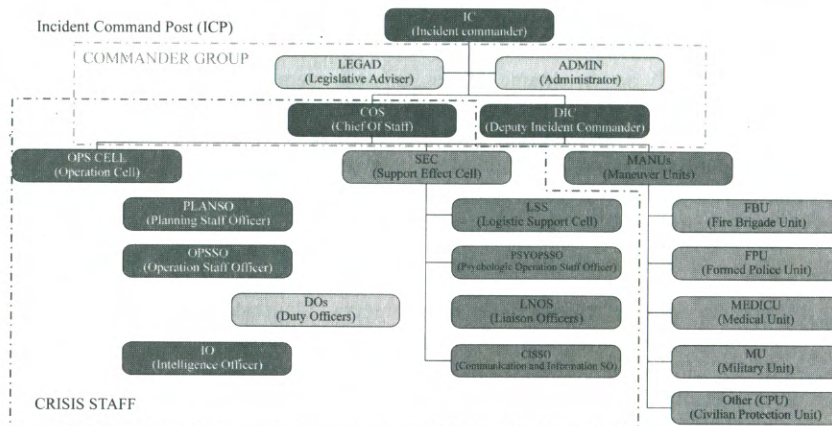


Fig. 1 Basic personnel structure of the crisis staff

At the present time, there are several parts which are necessary to develop in work of crisis staff. First one is cooperation between deploying units, especially the units which are not usual parts of immediate rescue team, such as military units, human organizations, etc. Second one is the fact that the crises staff is usually established directly on the spot without any possibilities to train or prepare all its parts in preliminary phase. Prepared structure of crisis staff is the best way how to train these units, nominate and designate the "high value" personal for each function and ensure the cooperation of all deploying units.

3 Analysis of Basic Personnel Structure of Crisis Staff

Crisis staff is usually lead by the Chief of staff (COS), who is directly subordinate to the on-site commander (incident commander). COS is appointed to this function from the higher-ranking level and is characterized by the precise work, perfect knowledge of all spheres, strategic thinking and strong-mindedness [3].

COS is responsible for:

- leading of the whole crisis staff,
- expert consultancy,
- co-ordination of the commanders intent and operations,
- co-ordination of the situation demands and real capabilities.

Crisis staff consists of two main cells:

- operation cell (OPS CELL),
- support effect cell (SEC).

OPS CELL is the main part of the crisis staff. It is usually led by a senior staff officer (Chief of the operation cell). The main tasks of this cell are information gathering, planning and managing of the operations. Generally there are several main steps in the OPS CELL activities, which are created during the whole course of DMP. These steps are:

- receipt of the mission,
- mission analysis,
- course of action (COA) development,